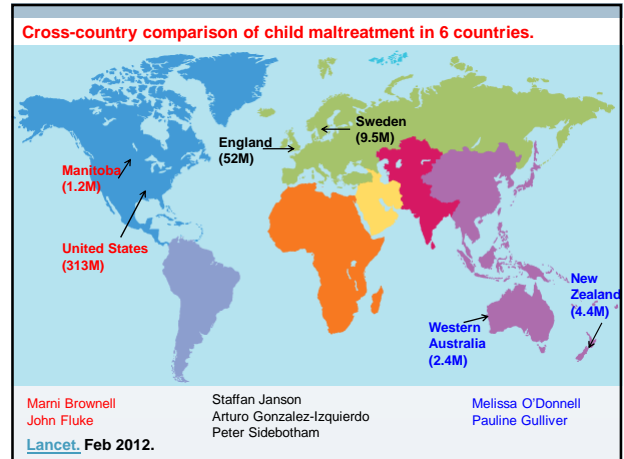


UCL

Recognition and response to child maltreatment in health care settings

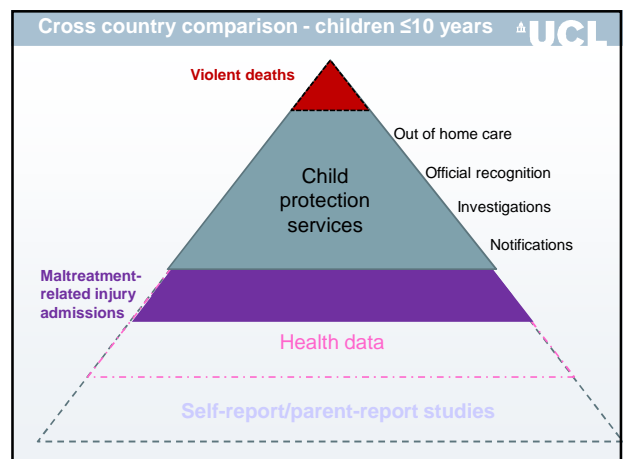
Ruth Gilbert
UCL Institute of Child Health
r.gilbert@ucl.ac.uk

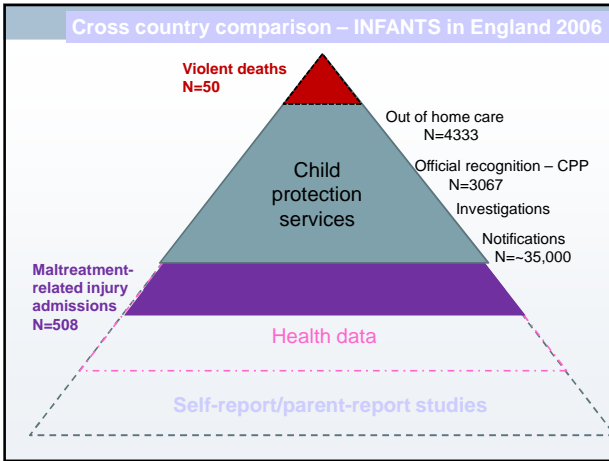


UCL

Overview:

1. **Healthcare in perspective**
2. Taking a population perspective
3. Child life course – changing presentations
4. Health care contact with the family

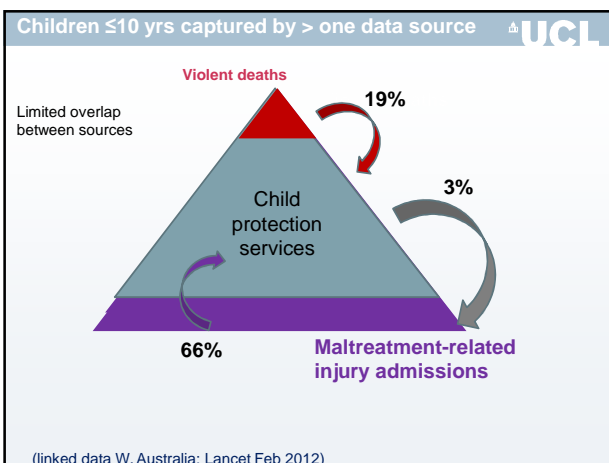




UCL

Across 6 countries

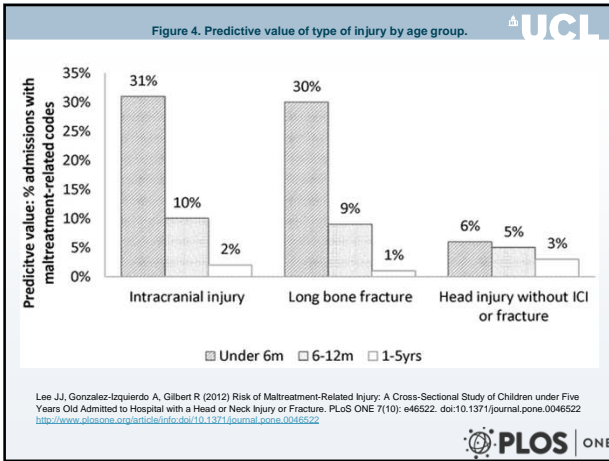
- Violent deaths and maltreatment-related injuries:
 - tip of the iceberg
 - similar rates (<2-fold variation, except for USA)
 - 2 to 10-fold variation for child protection agency indices



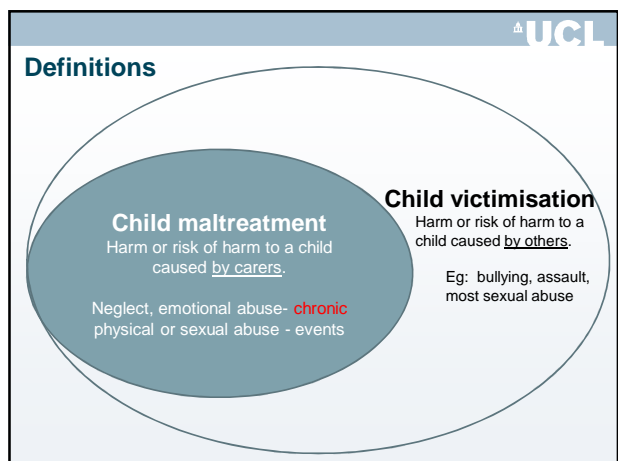
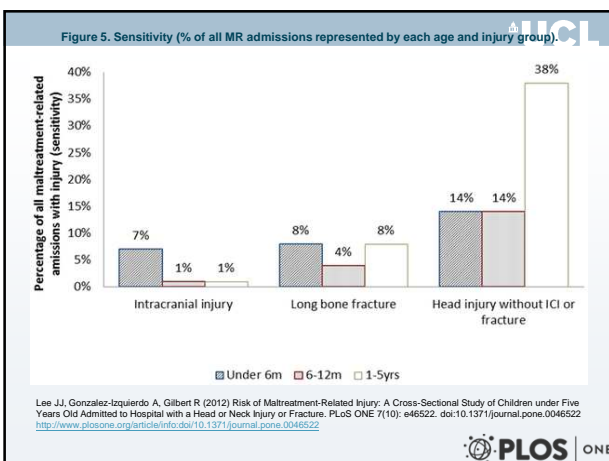
UCL

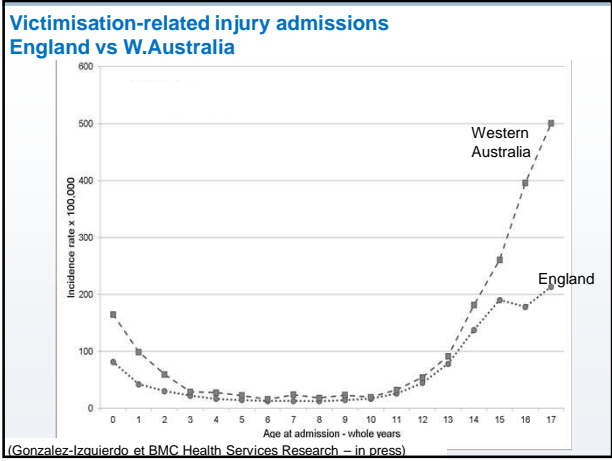
Overview:

- Healthcare in perspective
- Taking a population perspective**
- Child life course – changing presentations
- Health care contact with the family



- Overview:**
1. Healthcare in perspective
 2. Taking a population perspective
 - 3. Child life course – changing presentations**
 4. Health care contact with the family

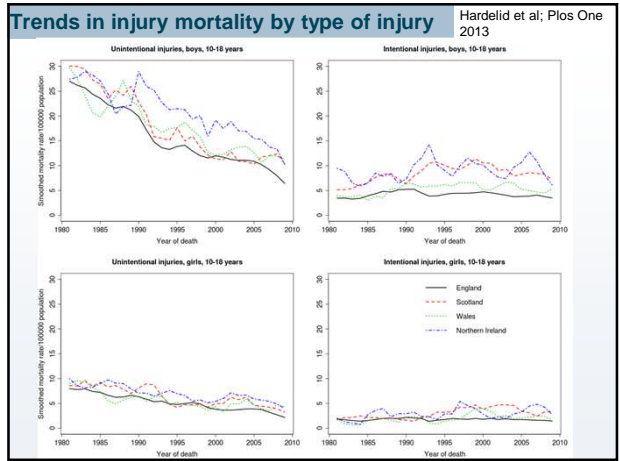
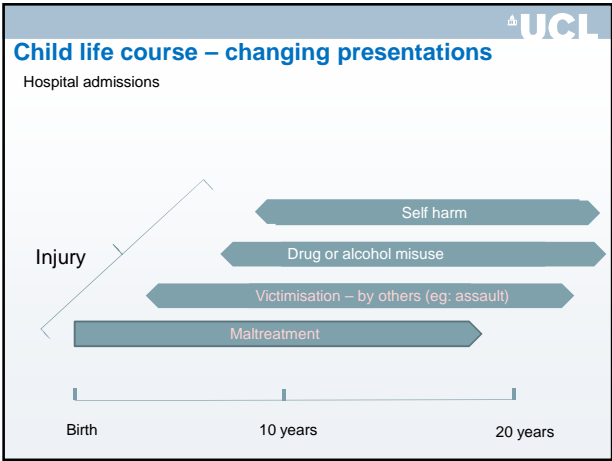


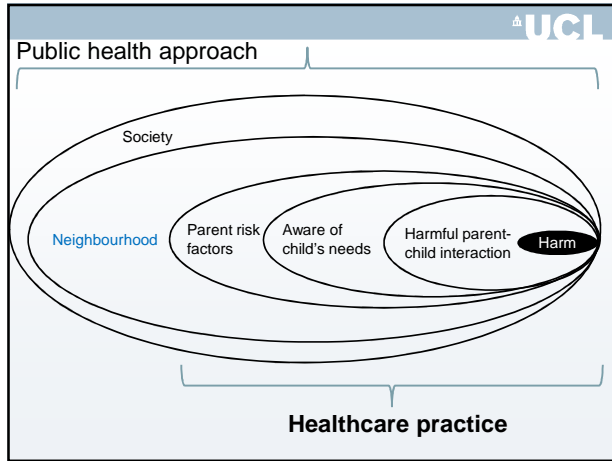
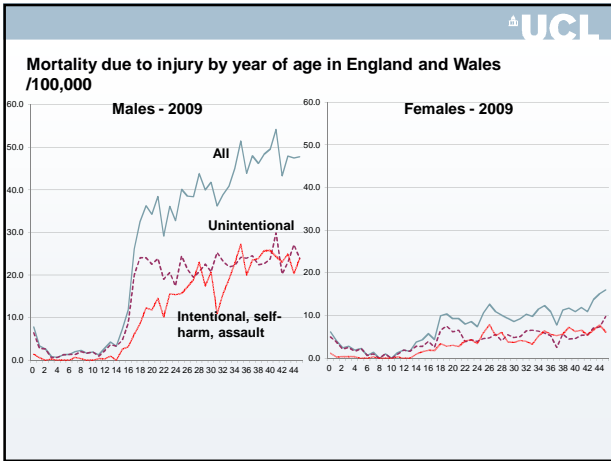


UCL

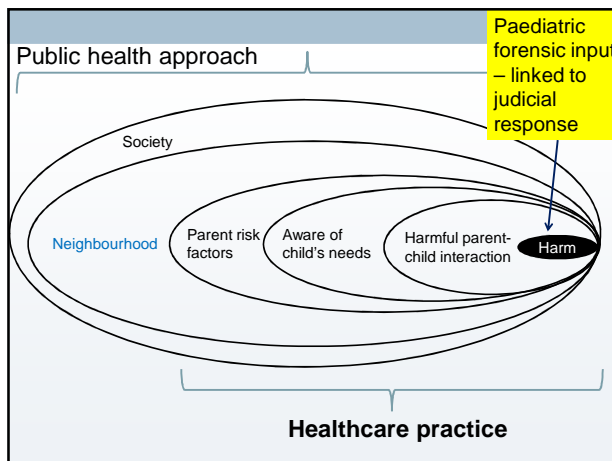
	% of all injury admissions at age 17 years			
	victimisation	Self-harm	Substance misuse	Any adversity
England (97-10)	13.2	24.7	33.4	44.5
Scotland (97-10)	18.1	25.4	35.6	50.1
Western Australia (00-10)	24.8	14.9	28.1	40.7


Gonzalez-Izquierdo, unpublished





- Overview:**
1. Healthcare in perspective
 2. Taking a population perspective
 3. Child life course – changing presentations
 - 4. Health care contact with the family**



Whole system - perspective from a central London general hospital 

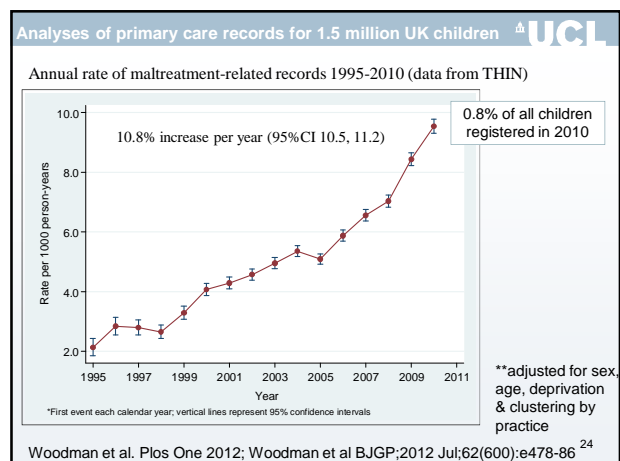
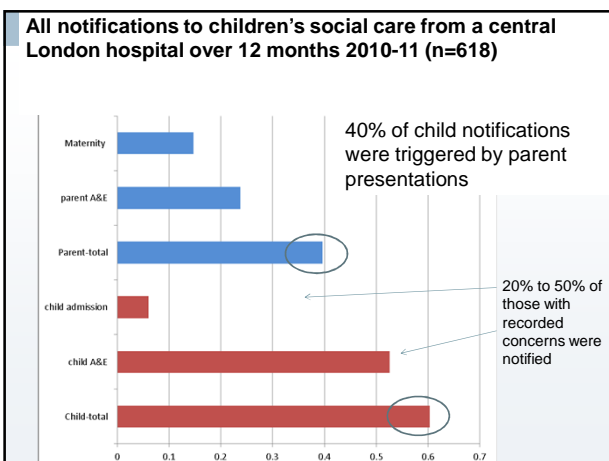
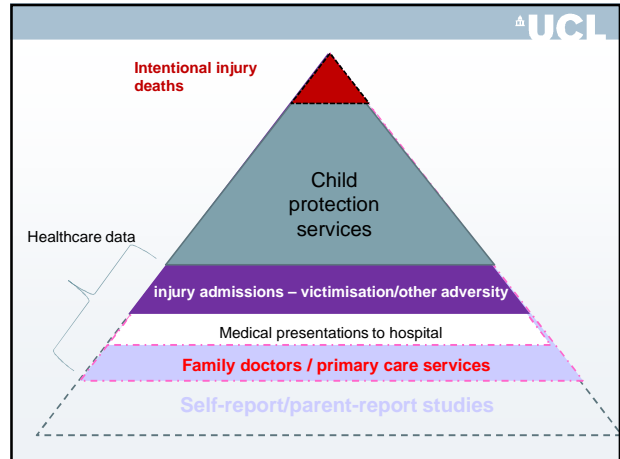
Since 2003 all staff trained:

- to recognise children who need safeguarding
- to ask adults presenting due to:
 - violence
 - drug or alcohol misuse
 - mental health problems

....about children at home

- to notify children's social care services if concerned

Unpublished data



UCL

Increasing but still under-recording

	Coded in THIN (% in 2010)	Community incidence (% per year)
Maltreatment	0.8	4-10
Child protection plan	0.2	0.4
Referral to social care	0.1	5.6

- Recorded 'hard' outcomes – eg physical abuse
- Discussed emotional abuse and neglect – recognised and managed through knowing/supporting parents

Woodman et al. Plos One 2012; qualitative unpublished 25

UCL

Acknowledgements

Arturo Gonzalez-Izquierdo, Jenny Woodman, Andrew Woolley, Annie Herbert, Alli Ward, Joseph Lee, Pia Hardeid

Key collaborators: Irene Petersen, John Fluke, Melissa O'Donnell, Marni Brownell, Pauline Gulliver, Staffan Janson, Marian Brandon, June Thoburn

Funders: Depts of Health (through the Children's Policy Research Unit); NSPCC

UCL

The way forward for health services.....

- Respond to varied manifestations of maltreatment and its consequences across the child life course
- Whole system - parents and children – primary care at the core
- Need effective, community-based therapeutic responses for parents and children